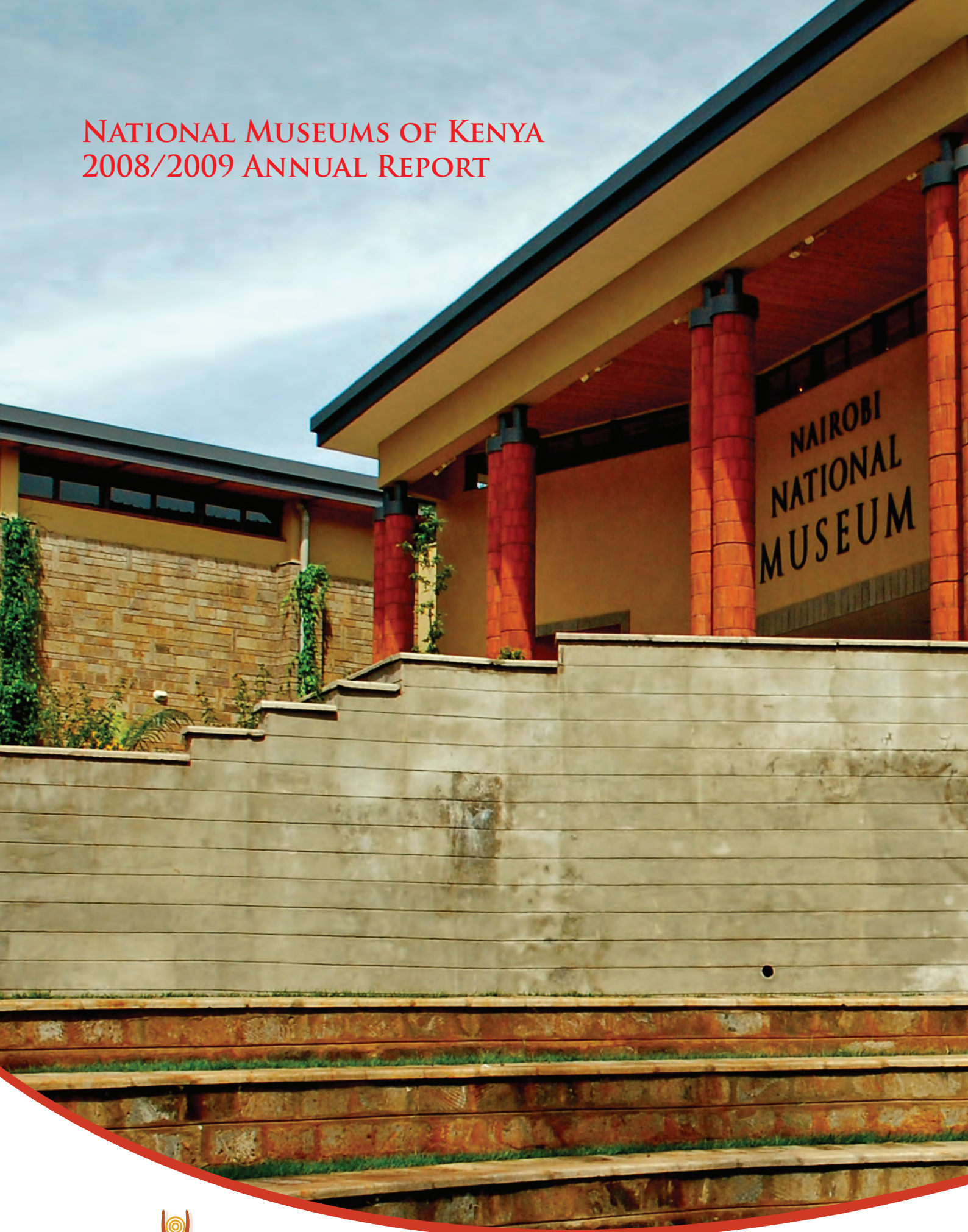
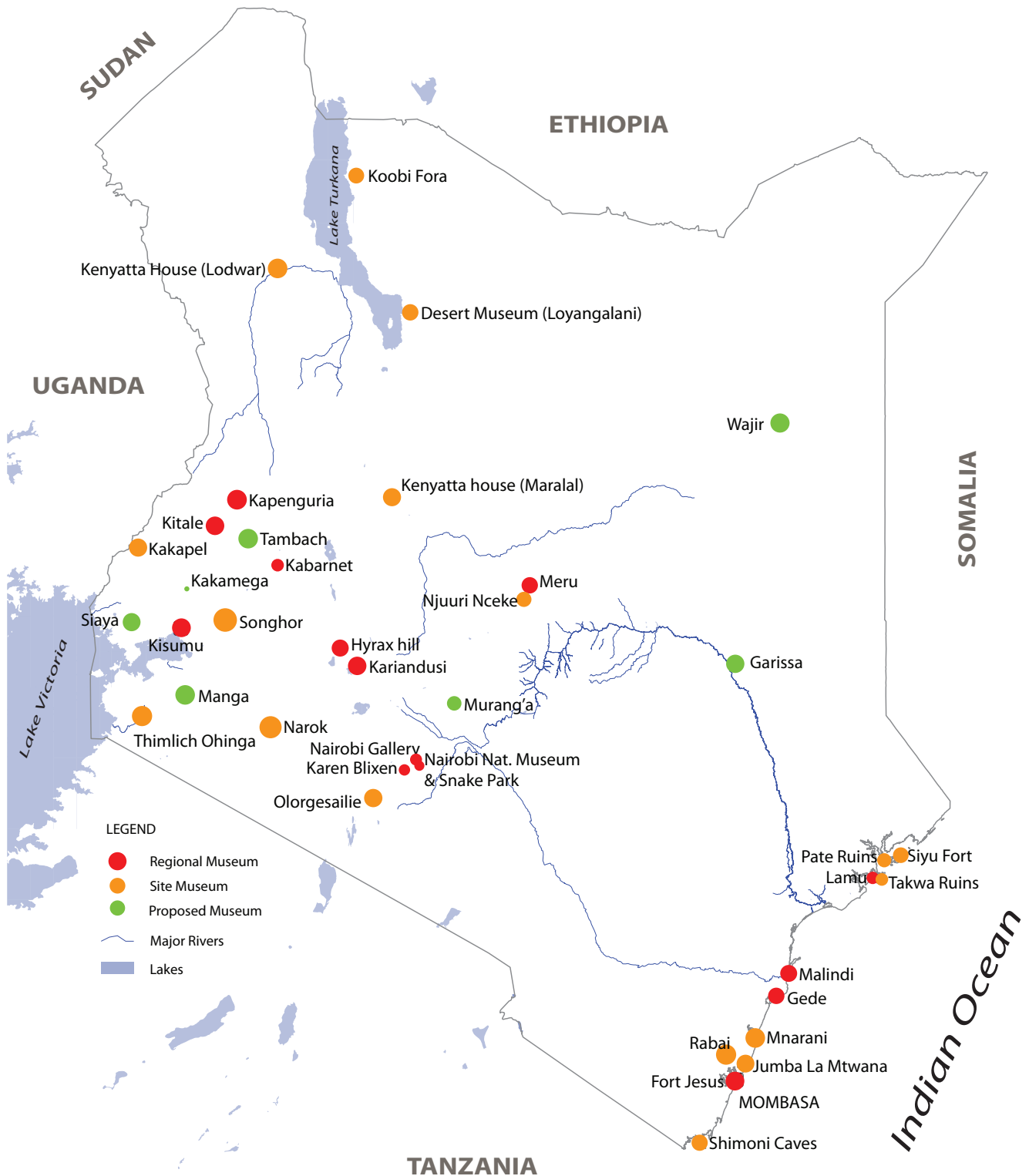


NATIONAL MUSEUMS OF KENYA
2008/2009 ANNUAL REPORT



NATIONAL MUSEUMS OF KENYA
WHERE HERITAGE LIVES ON

Museums, Sites, and Proposed Museums



The background of the entire page is a photograph of the Uhuru Monument in Nairobi, Kenya. The monument is a tall, slender, tapering stone tower with a pointed top. At its base, there is a large, circular archway. Inside the archway, a statue of a woman is visible, holding a child. The monument is surrounded by lush green trees and a paved walkway. The sky is a clear, pale blue.

OUR VISION

To be a centre of excellence
in heritage management
and research for the benefit
of humanity.

OUR MISSION

To collect, preserve, study, document and present Kenya's past and present cultural and national heritage.

Table of contents

Map of Museum and Site Museums (<i>Inside front cover</i>)	
Our Vision, Mission	1
Our Core Functions and Core Values	3
Chairman's statement	4
Forward from the Director General	5
Board of Directors	6
Directorate of Museums Sites and Monuments	8
Exhibitions	10
Nairobi National Museum	11
Central Region	14
Western Region	17
Kariandusi Museum	18
Kisumu Museum	19
Kapenguria Museum	22
Kitale Museum	23
Coast Region	23
Fort Jesus Museum	24
Directorate of Research and Collections	28
Earliest evidence of modern Foot anatomy and gait	30
NMK Research open day	32
Fresh debate on human origins	34
Resource Centre	36
Directorate of Human Resources and Administration	38
Directorate of Development and Corporate Affairs	40
Audio-Visual Dept.	41
PR & Marketing Dept.	42
Computer Services Dept.	43
Pictorial	44
Financial Report	46
Our Donors	49
Countrywide Offices	50

Articles and reports contributed by different departments of the National Museums of Kenya.

Edited by Connie Maina and Sharon Kyungu.

Compiled by Irene Wambugu, Juliana Jebet, Hellen Njagi, Mark Kamau.

Photography: Bernice Macharia, Ebrahim Mwangi, Steve Okoko, Mark Kamau.

Design and layout: Mark Kamau

Printing: The Creative Print House Limited Nairobi

Cover photo: *Nairobi National Museum front facade.*
Back photo: *Spiral staircase Nairobi National Museum at night.*

A Publication of the National Museums of Kenya.

© NMK 2009.



Theresa Nyaboke

OUR CORE FUNCTIONS

To serve as a national repository for things of scientific, cultural, technological and human interest

To serve as a place where research and dissemination of knowledge in all fields of scientific cultural technological and human interest may be undertaken

To identify, protect, conserve and transmit the cultural and the natural heritage of Kenya.

To promote cultural resources in the context of social and economic development

To recommend to the government approval for the issuance of excavation, research, exploration and export permits for artifacts and specimens

OUR CORE VALUES

The National Museums of Kenya, shall endeavour to uphold the following key values in the delivery of services to all our clients and stakeholders:

Professionalism

We shall demonstrate expertise, efficiency and competence in the delivery of our duties.

Teamwork

We shall provide quality services to all our stakeholders with the utmost solidarity and mutual cooperation for the benefit of our society.

Integrity

We shall ensure openness in all our dealings and operations

Leadership

We shall set the pace in shaping the national agenda with respect to the promotion, conservation and management of our cultural and natural diversity.

Adaptability

We shall be creative, innovative and adaptable to the ever emerging trends in heritage management.

Environment protection

We shall at all times work to protect and conserve the environment in line with national and international obligations.



2.0 Chairman's Statement

In 2010, the National Museums of Kenya (NMK) will have been in existence for 100 years. Whereas this will be a time for celebration, it is also a time to reflect on our successes and think ahead as we chart out a road map for the next 100 years of NMK. In a big way, this has been happening and as is evident in this report, the last five years of NMK have been dedicated to re-positioning the institution into meeting the challenges of 21st century Kenya.

The legal reforms, the infrastructure development and staff re-organization that you will read about in this report have paved the way for the NMK's role in Kenya's growth and I am glad that they fit within the government's plan as spelled out in the Vision 2030.

Whereas the country has been facing various challenges in the last few years, I am proud to be associated with the National Museums of Kenya for its commitment and resilience in excelling in heritage management. The country's tourism was affected by the post election violence and this translated into reduced revenue as both domestic and international tourist flows were affected. This necessitated us to concentrate on the core mandate of the institution and to come up with quick wins which could benefit the institution. All in all, the work plans for the year was carried out and the NMK board is encouraged by the execution of the various strategic undertakings as had been spelled out in the 2005-2009 strategic plan.

This financial year was significant as it was within this time that NMK rebranded and repositioned itself within the country's social-economic spectrum. We have reviewed the management of the country's heritage resources with the aim of becoming more effective and efficient. The results are sustained growth of heritage facilities across the

country and this in-turn has increased the visibility of the country's heritage resources. To this end, I am grateful to the government, our development partners and stakeholders who have contributed immensely towards this growth.

NMK's commitment to its clients and communities that it operates within is vital in the success of heritage management in the new millennium. 2008-2009 will go down in history as the year that this commitment was pushed a notch higher as the museum was awarded the ISO 9001:2008 Certification.

With thanks to the leadership given by the NMK board and on their behalf, I take this opportunity to thank the Director General, the heads of the different Directorates, departments and sections as well as every staff member in making the last financial year a success. The times ahead are challenging but I am confident that if we continue with the same spirit of commitment and innovation as has been evident in the last few years, the National Museums of Kenya will realize its vision of being a centre of excellence in heritage management and research for the benefit of humanity.

Mr. Issa Timamy
Chairman of the Board

3.0 Director General's Forward



The past two years have seen NMK undertake major steps in changing its face in terms of service delivery to our customers as well as improvement of infrastructure in order to be at par with other world class museums, and to aim towards our vision of becoming a center of excellence in Heritage Management.

Since its inception, the museum has continued to showcase Kenya's rich cultural diversity to the public. Over the years museum visitors expressed the need to have it transformed to a more interactive centre. On October 15th 2005, their call was answered when the Nairobi National Museum closed its doors to the public for the first time. The historic closure paved way for a major expansion and revitalization project that has opened a new chapter in the history of the Museum.

The modernization process dubbed 'Museum in Change' was funded by the European Union to a tune of Kshs. 800 Million. The project had four important components; Legal reforms, Staff Restructuring, Physical Infrastructure development of the Nairobi Museum and development of new exhibitions and public programmes. The extensive modernization and expansion of NMK's flagship, the Nairobi National Museums was completed and the result of this renovation was a facility that can compete with other museums worldwide, offering unmatched services to visitors and changing our visitor experience to a more exciting and unforgettable one.

The institution also undertook a rebranding exercise that saw the change of our logo and market perception of museums based on research. This exercise sought to brand the museums as places where Kenya's heritage lives on and to educate visitors that museums are not boring places of old bones' but places where they could spend their leisure time enjoying Kenya's History as well as both natural and cultural heritage.

In order to effectively serve our customers better, NMK also undertook a restructuring exercise that saw the organizational structure change to effectively offer competent services to the public. Through employment of competent human resources and much needed training, the institution is now stronger in terms of professional service delivery and continues to grow from strength to strength.

The NNM is the premier museum and in addition to the museum, other facilities and attractions recently opened are the Snake Park and Louis Leakey Auditorium which have also been closed for renovations in order to complement services offered at the Headquarters. We have also undertaken a journey into becoming ISO Certified as well as mapping our Strategic Plan for the next five years.

Finally, NMK is working with other stakeholders to ensure that our museums are amongst the itinerary stop overs for both local and international visitors. We have achieved milestones and are looking forward to contributing towards the Vision 2030 in the national agenda for tourism development. We look forward to having a more vibrant and customer focused approach to serving the public as we endeavor to be the best in what we do.

A handwritten signature in black ink, appearing to read 'Idle O. Farah'. The signature is fluid and cursive, written over a white background.

Dr. Idle O. Farah.
Director General,

4.0 Board of Directors



Dr. Jacob ole Miaron

Permanent Secretary Min. of State
for National Heritage and Culture.



Mr. Issa Timamy

Chairman



Prof. Peter M. Ngau
Vice-chairman



Dr. Idle Farah
Director General



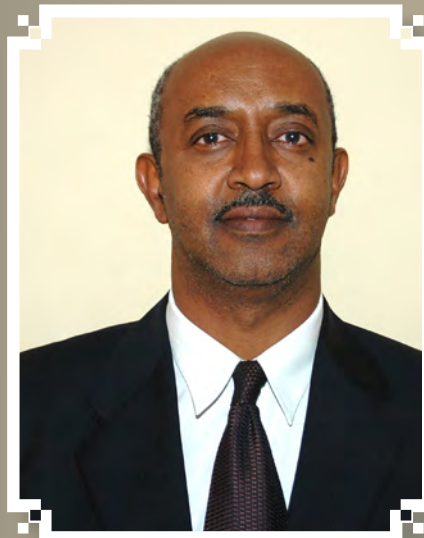
Mrs. Fleur Ng'weno
Rep. Nature Kenya



Dr. Sauda Swaleh
Director



Prof. Geoffery Muluvi
Rep. Kenyatta University



Dr. Rashid Aman - Director



Mrs. Alice Mwololo
Rep. Permanent Secretary Ministry
of Finance



Ms. Sanau Koillapa - Director



Prof. Shaukat A. Abdulrazak
Sec. National Council for Science
and Technology



Mrs. Peris Tobiko - Director

Not in picture Managing Director Kenya Tourism Board



5.0
Directorate of Museums
Sites and Monuments

Gede Ruins, Malindi



Introduction

The National Museums of Kenya has additional responsibility above its research and preservations. The extra activities are conducted through the Directorate of Museums, Sites and Monuments. The legal status of these activities varies and can be categorized into three levels as indicated below:

- Sites which are gazetted and owned by government
- Sites gazetted and owned by private individuals
- Sites designated as monuments but which are not yet gazetted

The NMK sustains a network of important regional museums and thousands of sites and monuments across the entire country. These are administered through four regions namely the Western, Central, Coast regions and Nairobi National Museum which is treated as a region on its own. Each of the regions is headed by an Assistant Director.

The Core Functions of the Directorate of Museums Sites and Monuments are:

- Conservation of Kenya's protected sites
- Identification and gazettement of sites
- Involved in listing of World Heritage Sites
- Development of museums and sites.
- Acquisition of title deeds for Museums and sites.
- Surveying and Mapping of heritage sites.



5.1 Exhibitions

cradle of humankind gallery at the Nairobi National Museum

Exhibition Development

The exhibits department promotes and enhances the public's access to the museum's knowledge and collections, both tangible and intangible. The department is charged with interpreting storylines from other departments for visual presentation. These visual presentations are eventually the infrastructure and exhibitions that are open to the public upon completion.

During the expansion of Nairobi National Museum (NNM), the department was involved in the expansion of display spaces, design of galleries, showcases and the presentation of objects. The department worked closely with the European Union NNM Project Office on the preparation of technical enquiry documents for tenders and suppliers.

The major tasks for the department included:

- Exhibition Design and Development
- Infrastructure Development
- Exhibits Installation and
- Interactive aids

While most of the work undertaken was concentrated in the Nairobi National Museum (NNM), projects were also carried out in the regional museums.

Infrastructure Development

The infrastructure development team supervised the construction of the extensions of the NNM and is the link between the exhibits department, contractors and suppliers of infrastructural content. The works undertaken included:

- NMK headquarters administration block: interior design, office relocation
- Main museum commercial wing- involved the selection and supervision of the works in the coffee shop, gift shop and restaurant.
- Herbarium building –conversion of former Computer Department to Ecology laboratory.
- Entomology department – extension of office space.
- Services- Liaison with main service suppliers such as telephone, internet, water and power.

Temporary Exhibitions

Besides the permanent exhibitions in NNM, the department also designed, supervised and installed the following temporary exhibitions.

1. The Birds Gallery
2. History of Nairobi Museum
3. Contemporary Art exhibition
4. Photomural exhibition of Kenyan wildlife

Others

The Exhibits Department assists in the installation of various temporary exhibitions within the NMK from time to time. It is also involved in the conceptualization and development of:

- The Kenya Police Museum
- The Public Service Week and
- Urtna Exhibition



Front facade of the Nairobi National Museum

The Nairobi National Museum was officially opened by His Excellency the president Hon. Mwai Kibaki on Monday 14th July 2008.

The Museum, which had been closed for period of two and a half years, had been through a successful expansion and refurbishment program which was funded by the European Commission at KShs. 800 Million.

The new museum opened with double the exhibition space, brand new exhibitions and a new name: The Nairobi National Museum with supporting tagline, "A Place of discovery"

The programme dubbed the National Museums of Kenya Support Programme (NMKSP) had four components: legal reforms, infrastructural development, organizational restructuring and public programmes.

In 2006, the Museums and Heritage act 2006 was enacted. This was a major achievement in the management of Kenya's heritage. The act enables the National Museums of Kenya to effectively address the enforcement of laws concerning heritage management in the country. The act also established a new legal framework for the domestication of international conventions and protocols on heritage for which Kenya has ratified. Previously the National Museums of Kenya operated under two separate acts that presented enormous challenge in the implementation of the Museums mandate as well as limiting the potential of the sector. The new act addresses these challenges and limitations.



H.E. President Mwai Kibaki (second right) and Kenya's Prime Minister (right) RT. Hon Raila Odinga try out one of the interactive installations at the Hall of Mammals gallery.

The museum in change programme also focused on organizational review. The restructuring saw a new organizational structure put in place, increasing service delivery and human resource management.

The third component of the EU funded programme was Infrastructure. This involved the expansion and improvement of Nairobi Museum and construction of a new visitor centre. The infrastructural changes were geared towards meeting the increased needs of the museums audience. The notable features of these changes include greater and increased accessibility of the country's heritage through more exhibition space and an all-inclusive approach to design that meets the needs of the museum visitors.

The visitor centre includes restaurants, shops and other amenities designed to enhance the visitors experience and to add value to the museum visits. There is also provision for outdoor cultural performances at the museum compound. Under this component too, a new, bigger and better administration block (Heritage Centre) was built and furnished. This has transformed the working environment at the museum headquarters in Nairobi.

The final aspect of this programme is new Public Programmes. The Museum's Public Programmes are designed to achieve among other things improved public access to the museum

collections and other heritage resources as well as their related information.

The Public Programmes create a forum through which the Museum and the public can dialogue on emergent issues in the society and identify heritage resources that can in a sustainable way be applied to people's needs.

Notably there is an effort in these Programs to share with the public the wealth of National Museums of Kenya collections and expertise as well as create awareness on career opportunities in the heritage sector.

The permanent exhibitions of the NNM include:

Hall of Kenya

This is a mixed gallery featuring photographs and artifacts from the spectrum of Kenya's natural and cultural heritage. The hall doubles up as space for private corporate functions. The highlight of this exhibition is a centerpiece made of gourds and calabashes from different communities in Kenya. The space for this exhibition also has a beautiful terrace with double stairs.



The Hall of Mammals at Nairobi National Museum

Great Hall of mammals

The exhibition highlights evolutionary relationships of this prominently visible group of animals and their key characteristics. A selection of mammal species has been used to show mammals moving: swimming, digging, running, climbing, flying; feeding- herbivores, omnivores, carnivores; defending themselves: using physical and chemical methods.

This gives a close experience with some of Kenya's renowned safari favourites including the big five.

Cradle of Humankind

The exhibition reveals the evolutionary change in hominids spanning a period of several million years up to the present and underscoring the position of Kenya and East Africa as the cradle of mankind. A selection of some of the world re-known fossils, reconstructions of hominids and prehistoric environments has been displayed to explain our origins as humankind. It highlights changes in structure and function in humans over time. It allows us to reflect into the past as we look into the future!



An exhibition at the Cycles of Life gallery at Nairobi National Museum

Cycles of life

This exhibition presents the life of most Kenyan communities in form of milestones and phases. The milestones are marked by key events such as birth, initiation/ rights of passage, marriage and death. The phases are childhood, youth, adulthood and ancestorhood. Cultural practices associated with the milestones and phases reveal a cycle of life for most communities in the country. A rational and deliberate attempt has been made to link past and present cultural practices.

Public Programmes.

The Public Programmes are built around the new exhibitions at the re-branded Nairobi National Museum (Cradle of Humankind, Great hall of mammals and Cycles of life). They are vibrant and are specially customized to meet the needs of the whole spectrum of museum visitors. They present unique ways of the public to interact with Kenya's cultural and natural heritage.

In addition, the Museum offers spectacular venues for hire for both corporate and individual clients giving a unique ambience to events adding a touch of cultural heritage.



The Hall of Kenya at Nairobi National Museum

5.2 Central Region



Loiyangalani, Turkana Kenya.

Introduction

The central region covers a vast area that comprises of several museums, sites and monuments falling within five of Kenya's administrative provinces, namely: Nairobi, Rift Valley, Eastern, central and North Eastern specifically, they include: Karen Blixen Museum, the Nairobi Gallery, Uhuru Gardens, Olorgesailie, Narok Museum, Kenyatta House –Maralal, Desert museum (Loiyangalani), Koobi Fora, the proposed Nyeri, Garissa and Wajir Museums. The Central Region has lots of diversity that ranges from cultures to monuments, landscapes, archaeological to palaeontological sites.

Major achievements

1. Big 3 Exhibition

The 'Big 3' exhibition was opened on the 11th October 2007 at the Nairobi Gallery and run for a period of one year. This photographic exhibition focused on the urban development during the first quarter of the 20th century, in Mombasa, Nairobi and Kisumu, in comparison with the present situation. The historical photographs dated from 1890 to 1930 and these photos at present are an invaluable and irreplaceable illustration of our cultural heritage.

2. Uhuru Gardens Perimeter Wall

Another milestone was the completion of the construction of a perimeter wall around Uhuru Gardens and another one separating the Heroes and Heroines square from Uhuru Gardens. A separate Title deed was issued by the ministry of lands.

3. Uhuru Gardens Offices

The establishment of offices of the assistant Director Central Region at Uhuru Gardens; this shall be the hub of the central region.

4. Space for New Museum

A piece of land measuring 17 acres was allocated to the National Museums of Kenya for the construction of a museum by Gardens County council. Fencing works have been completed.

5. Revenue Collection

Introduction of revenue collection at Uhuru Gardens. This is set to increase the revenue base of the institution; the board also approved the introduction of a car –entry charge. It, however, remains free to those walking in as the garden remains a public recreation park.

6. Kiso Muniyao Mausoleum

A mausoleum was constructed in honour of Mr. Kiso Muniyao, the independence hero who hoisted Kenya's flag atop Mount Kenya on Independence day.

7. Loiyangalani Desert Museum

The Loiyangalani Desert Museum, set by the blue-green waters of Lake Turkana's Eastern shores was

opened on June 14th 2008. It showcases the unique cultural, historical and natural heritage in the region.

8. Publications

The following publications were done;

Lagat Kiprop, (2008), *'Traditional, Trade and Transitional in East Africa, in Yoshida and Mack (eds.), Preserving the Heritage of Africa'* (OXFORD : James Currey, (2008).

Njuguna Gichere, (2007) *Regeneration of Gituune sacred forest in Kenya*. Published in ABN Magazine.

Research, documentation and conservation

- Environmental conservation programme through Community Ecological Governance (CEG) are being implemented in Gituune sacred forest by the Meru Museum. This programme is intended to create awareness the Gituune forest.
- A pilot project on Geographic Information Systems (GIS) Enhanced Ecological Mapping (GISEEM) for improved governance of natural resources under implementation. Three forest community groups in Gituune, Mukogodo and Karima hill have applied this tool in mapping their indigenous territories and community resources.
- A two-day preliminary archeological visited and excavation work was conducted by the NMK archaeological department at the ancient graves site in Saka, Sankuri division, Garisa district.

9. New Sites Gazetted

The following sites were gazetted as historical monuments;

- i) Railway house on lower hill road, Nairobi
- ii) Desai house on 2nd park lands avenue, Nairobi
- iii) Lands office on Moi Avenue, Nairobi.

Over 20 sites of potential cultural and natural Heritage significance were identified within Narok, North eastern province and central rift valley.

More research and documentation will be conducted in the next financial year.

10. Training

Ms. Sahara Ibrahim, the curator of Nairobi Gallery completed her Masters Degree Programme in Cultural projects for development offered by Turin University, Italy and the International Training Centre of ILO, Turin.

The Meru Museum's Education Officer, Ms. Mwanaima Salim was trained in Project Management, Conflict Resolution and Inter-Cultural Communication methods. The training took place in Sweden and South Africa's Iziko museum.

Eight members of staff from the Central Region were

offered basic skills on tour guiding by the Catering and Tourism Development Levy Trustees (CTDLT).


11. Collaboration

Meru museum and Japan Society for the Promotion of Culture (JSPS) have been collaborating in research into Indigenous Knowledge of the Ameru people. A website on Ameru Indigenous Knowledge was launched. More information on this collaboration can be accessed through website. www.ikmeru.com/home

Science for Ecological Health and Livelihoods Network (SHALIN) of Finland and Porini Association provided financial, technical and logistical support to the Meru museum for the community ecological conservation work in Gituune and Karima Hill.



Above: Turkana dancers during the Loiyangalani Cultural Festival. Facing page, sunset at Lake Victoria in Western Kenya

A full-page background image of a sunset over the ocean. The sun is a large, bright white circle in the upper center, surrounded by a yellow and orange glow. The sky transitions from yellow to orange to a dark red at the horizon. The water is dark with a shimmering path of light reflecting the sun. A small boat is visible on the horizon line.

5.2 Western Region



5.3 Kariandusi Prehistoric Site

A hand axe. Kariandusi Prehistoric site is known as the home of the hand-axe man

Introduction

Kariandusi pre-historic site was founded in 1928. Located near Lake Elementaita on the Nairobi-Nakuru highway, the attraction is home to the hand-axe man. A rise in the Lake level drove the men of that period from their lake-side home and buried all the tools and weapons which they left behind in their hurried withdrawal. The Acheulian stage of the great hand-axe culture to which this site belongs is found over a very widespread area from England, France, and Southwest Europe generally to Cape Town.

In the last financial year, Kariandusi prehistoric site set to achieve four broad objectives:-

- i. Expansion of the facilities and the improvement of existing infrastructure.
- ii. Development of public programme and improvement on interpretation and presenting of exhibitions.
- iii. Initiation of marketing strategies to ensure increase of visitors numbers and revenue and
- iv. Improvement of working environment.

Review of target achievement

In order to achieve the goal of expanded and improved facilities and infrastructure at the site, the following targets were identified:-

- a) installation of electricity
- b) building of new toilets
- c) repainting of roofs of buildings and structures
- d) restoration of picnic banda

Budgets for the installation of electricity, building new toilets and roof painting have already been forwarded and pending approval {electricity}and release of funds.

In the meantime the following has been carried out: routine improvement in our water supply, planted more trees to beautify the compound as well as purchasing some chairs to be used by visitors and staff.

Public programmes were developed and improved. All existing information panels at the archaeological sites were repaired and directional signs were introduced.

A HIV/AIDS programme at the site was conceptualized for the staff, the neighboring community and visiting groups. The programme is being coordinated by peer Educators.

The site is marketed using by brochures distributed at different venues. It has featured on the Out and About programme on Kenya Television Network and *Taifa Leo* newspaper. This, coupled with its location along the busy Nairobi-Nakuru road has resulted in increased visitor numbers.



5.4 Kisumu Museum

Students at Kisumu Museum during one of the educational sessions offered by the education department

Education programs

The department developed a total of nine (9) new programmes in the last financial year. The programmes were implemented every three months to correspond with every school term. The programmes were:

- Birds
- Reproduction in plants
- Adaptations of Reptiles
- Museum biological techniques [for colleges]
- Food chains and webs [an ecology programme for primary school]
- Follow those footprints, [a science programme for upper primary]
- Adaptation of plants [a science programme for primary schools],
- History of early man [a programme for secondary schools]
- Plants and their uses [a programme for secondary schools]

The new programs were publicized to the schools by mailing publicity materials. A total of 37 schools took part in these programmes. Some programmes like plants and their uses, adaptations of plants and lecture on early man continue to receive bookings.

Bookings

A booking form was developed and adapted every three months in line with the new programmes.

The last quarter of 2007 was the most impressive with

the museum receiving a total of 29,873 visitors. There was a drastic decline in the first and second quarters of 2008 due to the post election violence. The visitor turnout remained poor in 2008.

Main Gallery

A routine general condition assessment survey of the gallery was conducted. It was found out that insects had attacked some objects inside the showcases especially the objects made of leather. A detailed check on the head dresses revealed insect damage. The infected objects were isolated, treated and taken back to the showcases.

Further conservation measures undertaken in the gallery include gallery temperature and humidity monitoring.

The data collected is being used to further adjust the conservation measures within the galleries.

Live Exhibits (Snake Park & Aquarium)

Snake Park

On 19th March 2007 members of the department went to the field and caught a Forest Cobra around the lake shores.

On 3rd February 2008 one of the Gabon Vipers gave birth to 27 live young ones.

On 5th May 2008 members of the department caught an adult female African Rock Python which is still on display at the snake park.

In August 2008, 17 snakes were donated from the Nairobi snake park. This were the speckled sand snake and the Boom slang

Apart from snake there are 2 Nile crocodiles, 1 giant Aldabra Tortoise, 10 Hinged Back Tortoise, 17 Leopard Tortoise and 9 Marsh Terrapins

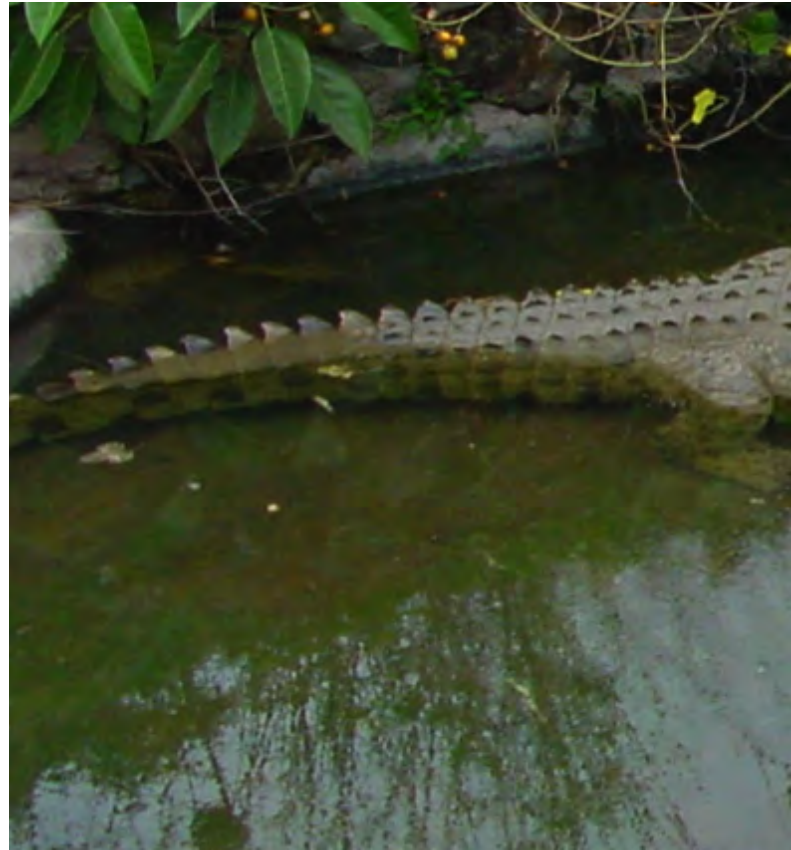
Aquarium

In November 2007 fish sampling was carried out around River Nyando. A total of twelve fish species were collected. Of this the notable species were *Ctenopoma* , the Spiny eel, Labyrinth fish and *Marcunius*

In February 2008 there was complete overhaul of most tanks that had stayed without being attended during the post election crisis.

In May 2008 there was complete overhaul of the breeding ponds. This involved emptying the pond, cleaning, sealing leaking parts and replenishing it with younger fish.

Between May and August 2008 the students on attachment taking applied biology and wildlife management were taken through practicals on care and maintenance of aquarium.



Above: A crocodile in the Kisumu Museum Snake Park.

Below: The Luo Homestead exhibition at the Kisumu Museum





The Newest Gallery at the Kisumu Museum. The Museum now has 3 exhibition halls. Their design is inspired by the circular huts common in the communities that lived around Lake Victoria

Kisumu Museum opens third gallery

The Government of Kenya through the Ministry of State for National Heritage and Culture spent KSh. 10 million to construct the 3rd Gallery at the Kisumu Museum.

An exhibition titled 'Windows of Africa's Past' developed by the Trust for African Rock Art (TARA) and supported by the French Embassy was opened on 23rd February, 2009 by PS Ministry of State for National Heritage and Culture Dr. Jacob Ole Miaron.

In his speech, the Permanent Secretary observed that the gallery would be used for debates and exhibitions on socio-cultural, historical and scientific discourses on the people living around the Lake Victoria Basin, extending to the rest of the Western region. Further, the gallery would be the centre for promoting and building capacity for local artists.

The PS revealed that the Ministry of State for National Heritage and Culture is putting in place a heritage centre at the heart of Kogelo Village where the American President, Barrack Obama has his roots and to also gazette it as a national monument. He said that Western Region was endowed with a rich heritage including natural landscapes; rock art sites, paleontological and archaeological sites which were yet to be fully exploited.

5.5

Kapenguria Museum



The Kapenguria Cells where freedom fighters were detained

Introduction

Kapenguria Museum is one of the latest additions to the Western regional Museums network of Kenya. It was officially opened in 1993. During the opening ceremony, the former Director of National Museums of Kenya Dr. Mohamed Isahakia, described Kapenguria Museum as 'unique'. This is because it represents a step to post Colonial Construction of national self esteem in several ways. First and foremost it addresses the history of our colonial legacy. Secondly it integrates the cultural identity of the Pokot and Sengwer community and their environment.

The museum is located in Kapenguria town at the site where the six most influential leaders in the struggle for Kenya's independence were detained. The Kapenguria six were the founding fathers of the Kenyan Nation - Mzee Jomo Kenyatta, Kungu Karumba, Mr. Fred Kubai, Mr. Paul Ngei, Bildad Kaggia and the Hon. Ramogi Achieng Oneko. All of them have passed on although their legacy still lives on.

Displays in the Museum include books and documents in a memorial library in honour of all heroes who participated in the struggle for independence.

The following projects were undertaken during the past financial year:-

1.Planting of seedlings:

Planting of 1200 Cyprus seedlings around the museum compound

2.Pavement Construction

Construction of pavement slabs took place during the month of October and November. The previous slabs were constructed in 1993 and they were worn out with time.

3.Sengwer Homestead

The Museum has plans to construct a new Sengwer homestead and seventy bundles of thatching grass have been purchased.

4.Documentation of artifacts from Netherlands

Fifty artifacts were documented. The artifacts are to be photographed for accessioning.

5.Temporary Displays.

The displays are written on manila papers and are attached to hard boards. This material is developed as part of our educational programmes that offered to school parties.

The following topics have been covered.

- (a) European Invasion of Africa and Process of Colonization
- (b) The Scramble and Partition of Africa
- (c) Establishment of Colonial Rule in Kenya
- (d) Impact of Colonization

6.Outreach Programme

We carried outreach programs this year and we targeted sixty (60) schools by the end of July. An Assistant Education Officer visited schools in Eldoret where he was able to talk to 20 heads of both primary and secondary schools. The aim of the outreach programs is to create awareness on the museum. Through this school visiting programmes the museum has increased its visitor numbers.

7.Collaboration

- a. On 5th May 2008 a meeting with Scouts Movement officials took place at the Museum. The museum is a member of non-uniformed scouts and the aim is to introduce heritage clubs in schools with objective of creating awareness on our heritage.
- b. The District's Cultural Officer and Youth Officer and the curator are working together as a team on matters pertaining to youth development and culture in the area.

8.Challenges facing the Museum

- i) Financial Constraints
- ii) Low visitor turnout as compared to other museums in big towns
- iii) Poor marketing strategies
- iv) Inadequate exhibitions
- v) Poor community participation



The main exhibition building at Kitale Museum

5.6 Kitale Museum

The museum was the first of the Inland museums to be developed in Kenya. It used to be known by the name the Stoneham Museum. It got its name from an amateur naturalist who lived in Kitale, by the name of Lieutenant colonel Hugh Stoneham. He had a collection of insects, other animals and books from 1894 when he was only five years old. He continued his collection until 1966 when he died. Mrs. Linda Donley a peace Corp volunteer was the first curator in 1974.

In 1926, he founded the Stoneham Museum, a private museum and later willed his collections as well as funds for a new museum building to the Kenya Nation. A new building was erected on five acres of land on the outskirts of Kitale town. In December 1974, the National Museums of Western Kenya was opened and became the first regional museum in the Kenya Museum Society.

The Kitale Museum has a lot of ethnographical materials collected from surrounding ethnic groups in addition to Stoneham's collections.

The traditional huts in Kitale museum are a huge attraction to students and other visitors. Any one familiar with the Nandi, Sabaot and Luyhia Bukusu can attest to their creativity and importance as part of the Western region heritage .

Challenges

- The management approach aimed to protect the huts was outdated and ineffective.
- The museum inventories of these huts were incomplete or non-existent.

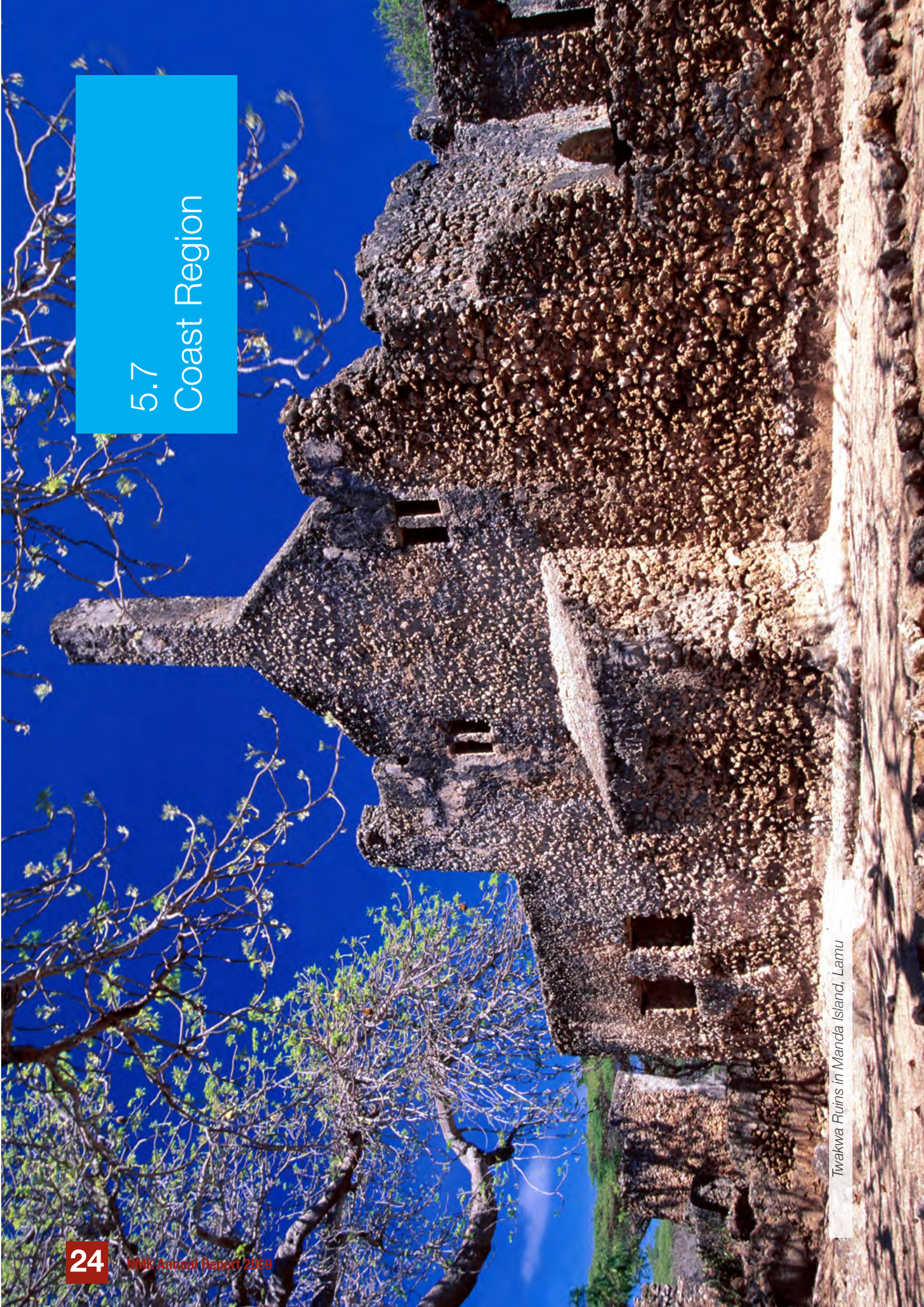
- The local communities were not involved in the conservation process.
- The museum did not have sufficient professionals and skilled people to carry out repairs and maintenance using traditional methods and materials.

The Museum management's undertook to create a mechanism which would enable exchange of knowledge and best practices among staff, visitors and the concerned communities. This would help reduce the isolation by the traditional skilled people within the exhibited communities while ensuring a rapid dissemination and interpretation of cultural information.

Achievements

1. Updated management approach aimed to protect the traditional huts.
2. Domestic artifacts have been displayed in all homesteads apart from the Sabaot homestead which is still under construction.
3. The homestead inventory is complete.
4. Effective strategies for sustainable tourism have been developed.
5. The ethnographic survey of Nandi and Bukusu communities is complete. The findings have been integrated in the exhibitions.

5.7
Coast Region



Twakwa Ruins in Mandla Island, Lamu



5.7

Fort Jesus Museum

The Fort Jesus Museum

The Portuguese built Fort Jesus in 1593. The site chosen was a coral ridge at the entrance to the harbor. The Fort was designed by an Italian Architect and Engineer, Joao, Batista Cairato. The earliest known plan of the Fort is in a manuscript Atlas by Manuel Godinho de Heredia - dated 1610 which shows the original layout of the buildings inside the Fort.

Fort Jesus was built to secure the safety of Portuguese living on the East Coast of Africa. It has had a long history of hostilities of the interested parties that used to live in Mombasa. Perhaps no Fort in Africa has experienced such turbulence as Fort Jesus. Omani Arabs attacked the Fort from 1696 to 1698. The state of the Fort can be understood from the plan of Rezende of 1636 and other plans by Don Alvaro - Marquis of Cienfuegas and Jose -Lopes de Sa - made during the brief re occupation by the Portuguese in 1728 - 1729. In the Cienfuegas plan, the names of the bastions are changed.

Between 1837 and 1895, the Fort was used as barracks for the soldiers. When the British protectorate was proclaimed on the 1st of July 1895, the Fort was converted into a prison. The huts were removed and cells were built. On the 24th October 1958, Fort Jesus was declared a National Park in the custody of the Trustees of the Kenya National Parks. Excavation was carried out and the Fort became a Museum in 1962. The Fort is now an important historical landmark in the East African region.

After the general election of 27 December 2007, the country was gripped by the post election violence that saw the disruption of the nation's social and economic foundations. Tourism was affected immediately, and in less than a week into the violence most visitors left the country leading to the closure of most of the hotels at the Coast and in other parts of the country.

This negative development had a serious impact on the number of visitors to the Museum. The visitor numbers went down drastically, and with the loss of revenue, some of our operations were heavily affected.

However, despite the effects of the skirmishes, we can record quite a number of departmental activities that were carried out within the year. The Department of Sites and Monuments undertook the restoration works of the DC's office building and residence in Malindi and Shimoni respectively. The Department also did reconnaissance of the military landscape in Taita Taveta Districts and discovered very interesting military features and installations that have historical significance requiring gazettement to protect them from encroachment and vandalism. The rehabilitation and the landscaping of Dr. Krapf Memorial park were concluded with the generous support from the Federal Republic of Germany. The climax of the refurbishment of the Memorial Park was the organization of a workshop that focussed on the life of Krapf and his Christian mission in East Africa and beyond. This workshop was officially opened by the German Ambassador, HE Walter Lindner. The workshop brought together local and international scientists, the clergy, as well as local elders from Rabai where Dr. Krapf and his colleague Rebman established a mission centre in 1846.

The Archaeology Department did some work at Kaya Bate along river Sabaki. The department carried out an archaeological/cultural impact assessment at the Swahili Cultural Centre before the commencement of the construction of the RISSEA building, and also at the south east corner on the same grounds for SEACOM who were planning the construction of the landing point for the fiber optic cable. In Pate, the department together with the Tuone Foundation carried out some interviews to understand the social linkages of the Pate community. This will be followed by substantial archaeological work in the next financial year funded by the same Foundation. It is also important to mention that the Head of Coastal Archaeology, Mr. Herman Kiriama secured a scholarship for his PHD studies in Australia. He also has an engagement with Africa 2009 at ICCROM in Rome, Italy. We wish him the best in his endeavors. Ibrahim Busolo is now the Acting Head of the Archaeology Department.

Mr. Tinga Kalume, who from last year has been conducting research on Bango music for peer review and publication, was deployed from Rabai Museum to Mama Ngina Drive to take up the position of a Site Manager that was formally held by Mr. Alawy Abzein who was transferred to Lamu Museums to take up the position of an Administrative Officer (Now back in Fort Jesus Museum as a Public Relations Officer).

Before the general elections the Portuguese Government through the Portuguese Embassy had pledged to support NMK to salvage Vasco da Gama pillar from the threat posed by tidal currents that have seriously undermined the promontory on which the pillar is seated. The agreement was to send a certified marine structural engineer from Portugal to carry out a condition survey and advice on the best intervention. His coming was delayed due to the post election violence. However, he came at the close of this financial year and we hope he will submit to the National Museums of Kenya and the Portuguese Government the condition survey report for purposes of funding and implementation.

The Laboratory Conservation and Education Departments have also been very active in their programs. The last activity by the education department was the organization of a workshop for the Old Town Tourists Guides. The objective of the workshop was to bring the tourist guides together and discuss with them the importance of customer care and service, factual information, safety of the visitor and clean environment. More than 30 Tourist guides attended the Workshop

DC's Office Building, Malindi.

The Malindi DC's office building has undergone both structural refurbishment and general compound and environmental cleaning. The activities that have so far been successfully undertaken include:

- Scaling of the walls
- Electrical installations and fittings
- Roofing and
- Cutting of parasitic trees around the compound.

Mama Ngina Historical and Archaeological Site.

Since its gazettement as a national monument in 2005 most of the work has been centered on general maintenance of the site. This includes

- Clearing of unwanted trees and grass
- Planting trees and grass.
- Construction of a safety barrier
- Construction of sheds along the cliff edge
- Construction of a walkway along the cliff edge
- Drilling of a borehole and plumbing work

These works are ongoing.

Last year a rescue excavation was conducted and it gave indications that the site has archaeological potential. There is need for an exhaustive archaeological investigation of the site before any other work like landscaping is undertaken.

During the same period a study of the military installations was carried out.

The way forward

- There biggest challenge is the acquisition of a land title deed for the site
- Create proper partnership with the Municipal Council in order to avoid conflicts
- Development of a Conservation Management Plan

Proposed work for 2008- 2009

- Construction of an office and information center
- Conclude construction of the safety barrier,
- Complete resting sheds
- Finalize plumbing works;
- Planning and Designing of the site,
- Conduct comprehensive excavations,
- Conduct landscaping of the site,
- Renovation of military structures and opening a few to the public,
- Interpretation and presentation of the site.

Current activities

- Mounting of Bombay African Exhibition is in progress at the Old Law Court Gallery and soon to start is the mounting of the Swahili Doors Exhibition at the museum gallery.
- Preparation of Bombay African Exhibition brochure to be completed for the official opening of the exhibition.
- Providing guided tours and educational talks to school groups and interested parties.
- Receiving attachment students from various training institutions for attachment period

Documentation

The conservation laboratory requested the assistance of Mr. Ambrose Kingada in setting up a custom made database to store data on the Fort Jesus museum collections that the conservation laboratory is currently managing, This Fort Jesus collection database has now been set up and is in operation. Approximately a hundred of the museum collections have been entered into the database. Similarly, photographs of these collections have been scanned and will be included in the collection database forms. In this way, each of the documentation of the museum collections will have a photographic image for proper access. Efforts will be made to scan and include sketches and other data at a later date.

Apart form the database entry of the museum collections, the manual documentation is also ongoing and this year alone, some good amount of work has been achieved.

The Fort Jesus conservation laboratory also houses the documentation of the 7,000 artifacts retrieved from the sunken Portuguese shipwreck, the Santo Antonio de Tanna.



Visit by Iranian President

Iranian President H.E Mahmoud Ahmadinejad (third left) with Tourism Minister Hon.Najib Balala(second right) after touring Fort Jesus Museum

The President of the Islamic Republic of Iran, H.E Mahmoud Ahmadinejad visited Fort Jesus Museum during a one day tour in Mombasa on 25th February 2009.

The Minister of State for National Heritage and Culture, Hon. William Ole Ntimama was present to receive President Ahmadinejad together with other Government dignitaries. At the end of his visit President Ahmadinejad received a Swahili dhow presented to him by Hon. Ntimama. President Ahmadinejad's visit to the historical Fort Jesus was prompted by a visit to Tehran, Iran in 2007 by a Kenyan delegation led by former Heritage Minister, Hon. Shakombo who met the Vice President of Iran. The purpose of Hon. Shakombo's visit was to hold bilateral discussions on the areas of cultural heritage conservation, exchange programmes including capacity building mainly in the culture and heritage domain. It is here that the delegation expressed Kenya's desire for assistance from Iran in order to improve the overall management of cultural heritage in Kenya and use them in promoting tourism and economic growth.

More specifically, Kenya sought to learn from Iran's technology in preservation, conservation and restoration of textiles, plastics, metals, wood, clay and paper (manuscripts/historical texts).

The following areas of collaboration were agreed on

- Assist Kenya in capacity building by offering training and scholarships to Kenyans in both Kenya and Iran on the various areas of cultural heritage and tourism.
- Assist Kenya in the preservation, conservation and restoration of historical buildings and sites including Fort Jesus, Lamu Old Town, Fasu Island and Siyu Village (Siyu Island) built by Oman Arabs 70 years ago, Pate Island, Mtwapa ruins (near Whitesands). Kenya could turn them into world famous hotels and handcraft centres.
- Co-operate and collaborate with Kenya in the nomination of world heritage sites in both Kenya and Iran. Both countries agreed to co-operate within the framework of UNESCO and ICOM
- Assist Kenya in the area of conservation of maritime heritage an area Kenya has yet to venture. Encourage and facilitate more experts and scientists to come to Kenya to help in Conservation projects in designated areas.

6.0
Directorate of Research
& Collection



Lesser Flamingo in one of the Ramsar Sites

The Directorate of Research and Collections (DRC) is one of the arms of NMK which serves to fulfill two core functions of the institution namely;

(i) Serving as a national repository for things that are of scientific, cultural, technological and human interest as well as,

(ii) Serving as a place where research and knowledge dissemination is undertaken.

Day to day activities within the directorate, include conducting field research, collecting preserving and managing collections that represent the country's natural and cultural heritage as well as documentation and dissemination of the information generated through diverse media. These activities serve as the building blocks towards fulfilling the above functions.

In order to be more focused and effective in fulfilling its functions, the directorate underwent a major restructuring and re-organization along with the rest of NMK. This process culminated in merging research units and sections into six departments as opposed to the traditional sixteen departments that existed in the previous institutional structure. The new departments are; Botany, Zoology, Earth Sciences, Cultural Heritage, Centre for Biodiversity and Resource Centre. These are all headed by scholars in their own fields of expertise. The directorate has experienced tremendous human capacity growth in the past few years and houses about one hundred and twenty (120) research staff, twenty five (25) of whom are scholars of Ph.D levels.

Research And Collection Management

Research outputs from DRC are of international repute with most of its scientific publications finding spaces in international and regional peer reviewed journals. Besides the day to day taxonomic and curatorial activities, some of the highlights of the directorates' research activities in the past year include; identification and development of sustainable use technologies for some of the nation's useful medicinal plants; socio-cultural mapping of the Elmolos, a community that is currently threatened by extinction; community-based enterprises that market and sells products such as butterfly pupae, honey and mushrooms from local forests as alternatives for timber; promoting the use of fast growing farm grown timber species such as Neem trees for carvings as an alternative to threatened indigenous hardwood species; supporting the local communities to set up and manage eco-cultural tourism activities for cultural sites and forests such as the kayas; promoting the production of plant based products including soap, lotions insecticides as a livelihood activity for adjacent forest communities to reduce pressure on forest products; survey and restoration of some historical sites such as Thimlich Ohinga Cultural landscapes in Western Kenya; assessment and documentation of coastal kayas for purposes of listing as "World Heritage Sites".

Given NMK's function of serving as a national repository, DRC has under its custody, a diverse collection of specimens, artifacts and materials, the earliest of which

date back to the 18th Century. The collection, continues to grow and the current holding is composed of 3.5 million materials. They are broadly categorized as natural history specimens, cultural artifacts, prehistory artifacts including hominid fossils, pieces of artwork, books and journals some of which are of great historical significance.

Being the only institution where one finds a representative collection of nearly all biological resources (biodiversity) of the country under one roof, the directorate houses the National Centre for Biodiversity, designated so in 1992. Found among the collections are materials that are unique and of great value both nationally and globally. Due to the unmatched prehistoric heritage findings which are deposited in NMK collection holdings, Kenya is often referred to as "the Cradle of Humankind".

Linkages

Due to its significance in research both in the country and the region, DRC is represented in diverse scientific forums, task forces, committees and national environmental processes. As it has done over the years, the Directorate scientifically backstops national processes that lead to country position in diverse global environmental agreements and protocols. NMK researchers currently serve on CITES animal and plant committees, Encyclopedia of Life-Education and Outreach Committee, Consortium for the Barcode of Life Executive Committee and numerous other national and regional committees. More comprehensive reports on research and collection activities undertaken in the past one year are reported by respective departments.

Earliest Evidence of Modern Foot Anatomy and Gait



Scientists working at the Ileret site. Footprint bearing stratigraphic layers marked in red dots

Ground breaking research published in Science of 27 February 2009 revealed new evidence that one of our human ancestors, *Homo erectus*, had essentially modern foot anatomy and function.

In the leading journal of original scientific research, a team of researchers from Kenya, North America, Europe and South Africa reported on a set of hominin and animal footprints, which dated from 1.51-1.53 million years ago at Ileret, an area within the World Heritage Site of Koobi Fora in northern Kenya.

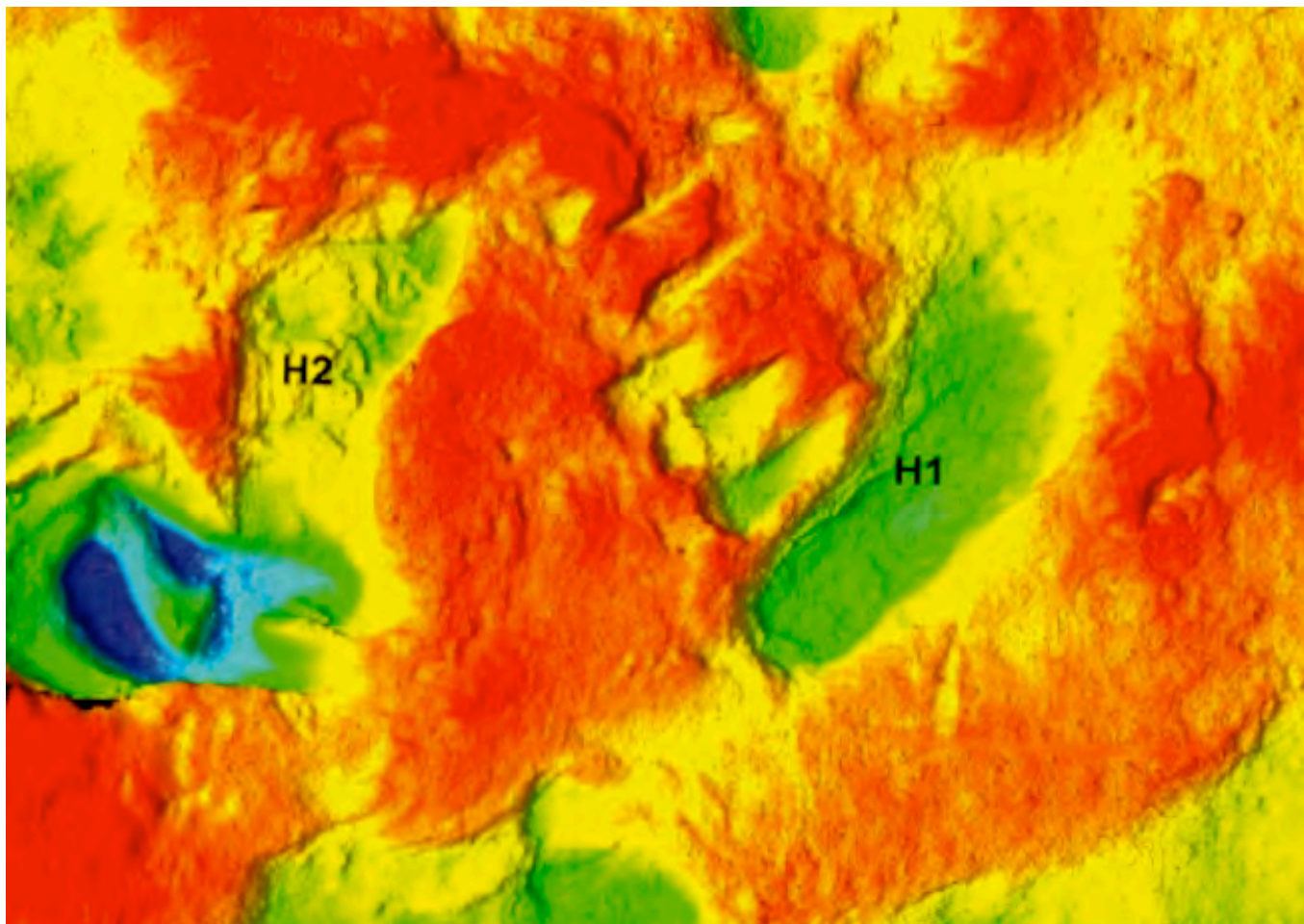
The research was conducted through a collaborative project “The Koobi Fora Research and Training Program” between the National Museums of Kenya (NMK) and Rutgers University, New Jersey. The Kenyan team of researchers included Drs. Emma Mbuia (a Senior Paleontologist & Head Earth Sciences Department-NMK), Mzalendo Kibunjia (a Senior Archaeologist & Director, Museums, Sites and Monuments-NMK), Purity Kiura (a Senior Archaeologist-NMK) and Daniel Olago (Geologist, University of Nairobi).

According to the team, the discovery of hominin footprints is incredibly rare, and the new prints are the second oldest in the world after the Laetoli prints in Northern Tanzania,

making this one of the most important discoveries in recent years with respect to research on the evolution of human gait. By applying geometric morphometric statistics to biological landmarks placed on the footprint scans, it was determined that the shapes of these prints are significantly more like those formed by modern humans compared to the prints from Laetoli (dated to 3.75 million years and believed to have been formed by *Australopithecus afarensis*). The unique structure of the modern foot is characterized by a fully adducted big toe, large and robust heel and tarsal sections, a pronounced medial longitudinal arch and short toes, all of which are evident in the footprints studied. This research establishes for the first time an objective methodology for the analysis and comparison of hominin footprints.

Moreover, based on the size of the prints and the stride pattern of these newly discovered footprints, the team determined that the species responsible would have been approximately 1.75 meters in height.

In addition, these footprints together with evidence from the archaeological record support the hypothesis of a hominin with a larger home range and enhanced dietary quality, giving us an emerging picture of the paleo-biology of early *Homo erectus* that suggests a shift in cultural and biological adaptations relative to earlier hominins.



Portion mosaic of scans viewed vertically showing potential hominid prints H1 & H2

These footprints were first discovered mid 2004 in two distinct sedimentary layers in a single outcrop in fine-grained mud at Ileret. Since then excavations have been ongoing by an International team that has included Kenyan field excavators, local and International students. The surfaces on which the prints were found have been dated precisely via inter-bedded volcanic ash layers and the process of laser scanning not only provides a unique method of analysis of the footprints, but also allows for their preservation since the sediments with the footprints are relatively soft and is steadily eroding, thereby placing this valuable site at great risk.

The National Museums of Kenya has pioneered research in early hominin evolution in Northern Kenya over the last 40 years and is happy to note that collaborative projects such as this continue to enhance the significance of the region and Kenya as a whole in the Scientific World. NMK will continue to work with all the stakeholders including communities of people inhabiting this region (e.g. the Dassanech) in conserving and protecting such significant sites.

NMK's Research Open Day



The first ever Research Open Day at the National Museums of Kenya was held on 20th November, 2008.

The two-day open day was organized by NMK's Directorate of Research and Collections to showcase collections of research programs, findings and innovations to the general public. The research activities undertaken at the Museum are mainly in the fields of earth sciences, zoology, botany and culture. The theme was 'Heritage research for peace and development'.

Hon. William Ole Ntimama, Minister of State for National Heritage and Culture officially opened the exhibition and said that the Government was aware of the challenges researchers were facing owing to lack of enough research funding and space to keep the ever growing number of collections.

As custodians of Kenya's natural and cultural heritage, the

Minister noted that the National Museums of Kenya has actively been involved in fulfilling its mandate of preserving and managing our country's heritage. The institution has done this dutifully and professionally through implementation of its three key functions; Collection management and documentation, Research, and Public programmes which include exhibitions, education and awareness activities.

He said that NMK has contributed to scientific advancement through research, publications, education, exhibitions and also acts as a leading forum for International Scientific Collaboration.

The Minister also announced that NMK through his Ministry had successfully managed to recover a few of the stolen artifacts that were taken out of the country.

It is worth noting that NMK plays a critical role in national development with some of its programmes geared



towards addressing poverty alleviation, food security and socio- economic development.

The ceremony was also attended by the Permanent Secretary, Dr. Jacob Ole Miaron, Mr. Issa Timamy, NMK board chairman, Dr. Idle Farah, Director General NMK among others.

Hon. William ole Ntimama (left), Minister of State for National Heritage and Culture tours the scientific exhibition mounted during the Museum Research open day.

Fresh debate on human origin

A National Museums of Kenya (NMK) research scientist has made a major fossil discovery of “early man”. The discovery of two new fossils by Dr. Fredrick Manthi challenges widely held views about human ancestry.

Speaking at a press conference to announce the new discovery at the NMK Headquarters, Dr. Manthi said the discovery would cast fresh light on a little understood and important period of human prehistory at the dawn of the homo genus. “I expect that this new discovery will stir up fresh debate and discussion on human origin. The co-existence of the two species makes it unlikely that *Homo erectus* evolved from *Homo habilis*,” he added.

The two fossils found in Ileret region, east of Lake Turkana in Northern Kenya, include an exquisitely preserved skull of *Homo erectus*, dated to about 1.55 million years ago. The skull is the smallest *Homo erectus* found thus far anywhere in the world. The other fossil is an upper jaw bone of *Homo habilis* that dates from 1.44 million years ago, which is more recent than previously known fossils of that species.

The Director General, Dr. Idle Farah said that the latest discovery shows that the National Museums of Kenya continues to play an important role in research to establish the origin of early man. The latest discovery attests to the fact that NMK plays a critical part in understanding the history of man. “We host within NMK unmatched, unique and diverse fossil collection that has rightfully earned Kenya the title the ‘Cradle of Mankind’ ”.

The *Homo erectus* was exceptionally well preserved, because it was entirely encased in sandstone when it was discovered by Dr. Fredrick Manthi.

Notes

Human evolution over the last two million years is often portrayed as a linear succession of three species: *Homo Habilis* to *Homo erectus* to *Homo Sapiens* (modern human). Of these, *Homo erectus* is commonly seen as the first human ancestor which is like modern human in many respects, but with smaller brain. The new fossils are significant because both their relative geological ages and their physical attributes directly challenge these views about our human ancestry.

The discovery shows that the *Homo erectus* and *Homo habilis* co-existed and makes it unlikely that *Homo erectus* evolved from *Homo habilis*. Instead both species must have had their origins between

2 and 3 million years ago, a time from which few human fossils are known. The fact that they stayed separate as individual species for a long time suggests that they had their own ecological niche, thus avoiding direct competition.

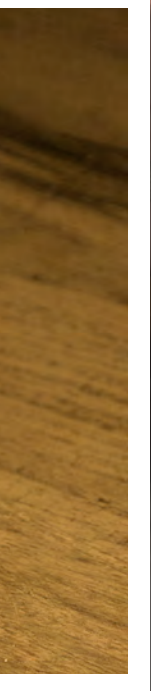
The new fossils were discovered by the National Museums of Kenya in collaboration with the Koobi Fora Research Project, an international group of scientists directed by Meave and Louise Leakey.

The NMK has one of the largest numbers and diverse hominid and fossil collections in the world. Research by NMK in this field continues to yield more information shedding light and doubt on previous finds and knowledge related to the search for the origin of humankind.

Facing page: Dr. Frederick Manthi addresses journalists on the new discovery.

*Below, upper Jaw bone of *Homo habilis**





6.6 Resource Centre

The Resource Centre department comprise of Library and Archives sections. Until March 2007 the two operated as two different departments. The institution's restructuring process merged the two and now they operate as sections of the Resource Centre in the Directorate of Research and Collection. The collections are an indispensable resource for research, exhibit development and other educational programmes of the Museum. The library covers all academic subjects, but strong in the areas of Anthropology, Natural Sciences, Environmental Biology, Museology and related subjects. Majority of the materials in the archives section are photographic materials and institutional records. Archival materials such as Joy Adamson's paintings on "Botany", "Peoples of Kenya" and historical photographs like "Dedan Kimathi and the Mau Mau struggle" are on display in the Museum gallery.

Library history

The library was established in 1910 by the East Africa Natural History Society (now Nature Kenya). In 1930, the Museum collection of natural history specimens became formally known as the Coryndon Museum. It started building its own library collection, with the bulk coming from donations and other activities of the museum. The two libraries were merged in 1961 under joint ownership, with the Museum being charged with the day-to-day running of the library. In 1983 the former Louis Leakey Memorial Library was transferred and amalgamated with the main Museum library. In September 2005 during NMK reorganization and renovation, the library closed for relocation and was moved to temporary sites. The library has continued over the years to concentrate on its main objective of developing and maintaining an Information Resource Centre with a relevant collection to support research work at the National Museums of Kenya.

The rest of the collection was temporarily stored in the former Heritage Shop and later transferred to the former Large Mammal Hall (see picture below).

From the large mammal hall the library found its way to yet another temporary location at the seminar room within the natural science building. The movement was done by none other than NMK staff using metal trolleys.

On 9th October 2007, the library completed its relocation process by finally moving to the purpose built modern Library on the ground floor of the Heritage Centre Building and opened its doors to the public.

The new library has provided a ramp for ease of movement for users in wheelchairs and also for those who can not use stairs to access the collection areas.



Electronic Information Resource (E-Resources)

The Library in its endeavor to provide relevant and up-to-date information has made tireless efforts to ensure that NMK researchers and other Library users are at par with their counterparts in the developed countries. Although not fully addressed, access to current research literature, has been enabled through subscription to free electronic information resources databases. The programmes used for research are OARE, HINARI, AGORA, JSTOR and ALUKA. These e-resources and especially the e-journals have greatly contributed in bridging the information gap. In addition, the collection continued to grow through donations and exchange of publications program with other NMK partners world wide.

Services

The library provides the following services:
Current Awareness Service (CAS)

- Lending Services
- Selective Dissemination of Information (SDI) Reference Service
- Inter-Library Loan Service for NMK Staff
- Binding Services
- Compilation of Subject Bibliographies
- Internet Service
- Compilation of Annual list of Periodical Holdings
- Scanning & Printing Service

Clientele

The Library is open to NMK staff, members of Nature Kenya, Members of the Kenya Museum Society, members



of the Museum Board of Directors, the general public at a minimal fee and Librarians of established libraries recognized by Kenya Library Association.

Opening Hours

The library is open Monday to Friday from 8.30am. to 5.00pm and is closed on public holidays and weekends

Collections Holdings In The Resource Centre

The following is a breakdown of collection holdings in the Resource Centre:

- Books 19,725
- Periodicals 1,700 Titles with 70 titles on subscription
- Reprints 40,000
- 200 Linear metres of Archival materials
- 4,000 Photographs (Historical, ethnographic, nature)
- 100 Microfilms
- 800 Paintings by Joy Adamson
- 100 Audio-tapes and CDs

Special Collections

The resource centre holds special collections of Joy Adamson's Paintings, Bishop Beecher, and Belcher on Birds, Photographs (Historical, ethnographic, nature) and reprints

Top. New shelves at the Library .

Museum staff work on photographic archives at the Archives section



7.0. Directorate of Human Resources and Administration



NMK Director General Dr. Idle O. Farah (centre) receives the ISO 9001:2008 Certificate from the Bureau Veritas representative. With the Director General are members of the ISO technical committee from the National Museums of Kenya.

ISO 9001:2008

In 2006, the NMK embarked on the acquisition of a Quality Management System, ISO 9001:2008 as was stipulated in the performance contract with the Ministry of State for National Heritage and Culture. The International Organisation of standards (ISO) has the mandate to facilitate international coordination and unification of standards. The body coordinates various standards. ISO 9001:2008 the standard that the NMK has qualified to acquire is centred on a quality management system based on an organisation's core business and aimed at ensuring that products and services are based on certain quality requirements.

To facilitate the process is a technical committee that is representative of NMK areas of operation. Headed by Dr. Abel Atiti as the Management Representative the members are Sharon Kyungu and Muthoni Thang'wa representing the Directorate of Development and Corporate Affairs, Steven Cheche and Anthony Njogu for Human Resources and Administration, Kiprop Lagat and Elizabeth Ouma for Museums, Sites and Monuments, Drs Lange and Manthi for Research and Scientific Affairs, Dr. Hastings Ozwara and Patrick Opisa for the Institute of Primate Research and Jonathan Mwangovya for finance.

An external consultant, Millennium Management Consultants (MMC) was brought on board to assist with the documentation of processes in an effort to ensure that NMK, nationally was at par in the process. By May 2009, the process was completed and Bureau Veritas identified as the certifying body.

ISO 9001:2008 requirements are based on 8 quality management principles, which are used by an organisation's management as a guide toward improved performance. They include: customer satisfaction, the role of leadership, involvement of people, business process approach, a systematic approach to management, continual improvement, a factual approach to decision making and mutually beneficial supplier relationships.

The technical committee has led the process in department drafting of quality systems procedures which will guide work processes in all departments. The corporate NMK has developed a Quality Manual Known as the National Museums Quality Management System Manual or simply the "Quality Manual" and a quality policy statement. Both documents are mandated by the Director-General and serve as the reference guideline for all issues concerning quality for NMK.

The manuals define what NMK stands for as an Organisation, how it meets customer expectations, the responsibilities and authority of those who oversee the quality programme, and defines training needs of those whose work impact quality. The parameters for corrective and preventive action are also spelt out herein. Management reviews and systems audits to ensure the quality system is maintained and continuously improved are also provided for.

It is expected that every member of The National Museums of Kenya family will familiarise themselves with this document in view of the fact that quality objectives can be achieved only with the active participation and commitment of all employees.

(At the time of going to press the NMK was ISO 9001:2008 certified.)

The following are the main highlights of activities of the Directorate of Administration and Human Resource during the financial year July 2007 – June 2008.

Appointments

The following appointments to key position were made between July 2007 to June 2008.

Director, Development and Corporate Affairs was appointed in July 2007 – Connie Maina

Director, RISSEA was appointed in July 2007 – Dr. Ahmed Yassin

Director, Administration & Human Resource was appointed in October 2007 – Mr. Steven Cheche

Development Manager was appointed in April 2008 – Josephine Thang'wa

Marketing & Public Relations Manager was appointed in April 2008 – Sharon Kyungu

Ag. Chief Curator Fort Jesus was appointed in November 2007 – Katana Jimbi

Ag. Assistant Director, Nairobi Museum was appointed in February 2008 – Simon Gatheru

Staff Welfare

Implementation of new medical Scheme

Starting January 2008, the National Museums of Kenya implemented a new medical scheme to cover its staff. Under the scheme, staff are provided with an annual medical cover of a limited amount depending on the job grade. A number of hospitals all over the country have entered into agreement with NMK to provide in-patient services to his employees/dependants.



8.0. Directorate of Development and Corporate Affairs

The last few years have been exciting for the Heritage sector in Kenya with the NMK successfully taking concrete steps in enhancing its capacity to deal with the challenges of a 21ST Century Kenya. These steps have included organizational restructuring and infrastructural development.

These efforts have been crowned with among others, the rebranding of the Institution with a new Logo and slogan – where heritage lives on, to reflect our vibrant and all-inclusive approach to heritage management.

With funding from the European Commission and the Kenyan Government, infrastructural development has been effected resulting in the new and expanded Nairobi National Museum, the flagship brand for the National Museums of Kenya's. His Excellency the President, Hon. Mwai Kibaki. The Vice President, Hon. Kalonzo Musyoka and The Prime Minister Hon. Raila Odinga were amongst the guests in the official opening of the Nairobi National Museum. The management plans to bench mark its museums and museum programs with this world-class facility.

The year also saw the official opening of the first Kenyan Desert Museum. On 14th June 2008 the Loiyangalani

Desert Museum was officially opened by the Minister of State for National Heritage and Culture Hon William ole Ntimama . Located on the Eastern shores of Lake Turkana, the Desert Museum opens up opportunities for interaction with the rich heritage of the Kenya's Northern region. Two more museums are set to be commissioned and inaugurated in Wajir and Garissa this year.

The country's heritage continues to get world recognition and this year, Kenya got one more site inscribed into the prestigious World Heritage Site bringing Kenya's World Heritage Sites to 4. Hon. William Ole Ntimama, Minister of State for National Heritage and Culture toured the coast on 14th August 2008 to celebrate the inscription of the Mijikenda Kayas (Mijikenda sacred forests) to the World Heritage List. The Kayas inscribed include: Kaya Giriama (Fungo, Rabai Kayas (Mudzimuvya, Bomu and Fimboni) Kaya Kambe, Kaya Jibana., Kaya Ribe, Kaya Kauma and the Duruma Kayas (Gandini and Mtswakara).

The efforts being undertaken have received both international and local accolades. The National Museums of Kenya clinched the first position for showcasing state Corporations Manpower, Education, Health, and Special Programmes during this year's Public Service Week held in August. The Architectural Association of Kenya (AAK)



The Nairobi National Museum at night during a private event

also awarded the National Museums of Kenya for restoring and preserving the Old Provincial Commissioner's Office now the Nairobi Gallery in June 2008.

The National Museums of Kenya strides on with dynamic public programmes across the country and new and exciting programmes for the near future including the development of the History of Kenya Gallery at the New Nairobi National Museum to add to the existing permanent and temporary exhibitions.

Audio-Visual Department

The National Museums of Kenya (NMK), audio-visual department was established in 1996. It has two units; the Video/Audio production unit and Photography/Multimedia unit. The Audio-Visual department's mission is to record and disseminate Kenya's tangible and intangible heritage through broadcast, electronic or print media for educational purposes.

The Audio-visual production unit is responsible for preparing programmes for educational purposes, including documentaries on the research work and findings by various research departments. The department contributes to a better understanding of Kenya's heritage

by packaging research findings in presentations at the NMK halls and galleries, broadcast, electronic and print media.

The collaboration between the research scientists and Kenyan communities has for the last 10 years resulted in the production of high quality educational programmes. Some of these productions have received both local and international awards.

Some of the recently released programmes include: *Loiyangalani cultural Festival, Turkana wedding, El-Molo and their culture, Museum in change, Lamu Maulidi, Evolution of a coastline, Secrets of Lake Bogoria, Soldiers of Nature, Containers, Khangas, Containers*

The photography and multimedia unit is responsible for photographic work including photo shoots, photo editing (including the restoration of old or damaged images) and digitization of analogue audio-visual data. The photographic database is extensive and the images are available for use upon re-production rights for use in print or electronic media.

8.1 PR & Marketing Department

The Nairobi National Museum re-opened its doors to the public in April 2008 after a three-year closure. During the closure, the museum was refurbished and expanded through a programme funded by the European Union at a cost of 800 million Euros. His Excellency the President of the Republic of Kenya Hon. Mwai Kibaki officially opened the new museum on June 14th, 2008. The Directorate of Development and Corporate affairs was involved in spearheading activities that led to this grand opening. This was a major milestone in the history of Nairobi National Museum.

The year 2008 saw the re-branding of the National Museums of Kenya and this included the adoption of new corporate image and a new logo. A new ultra modern office complex coined Heritage Centre was also built. This new office block with an open plan sitting arrangement houses the Library, Director Generals' office, Personnel, Registry, Accounts, Public Relations & Marketing and Development departments.

As part of the Corporate rebranding of the National Museums of the Kenya, the website was also developed and launched. The NMK website was revitalized with more up to date information, NMK corporate image and interactive media such as pictures, animations and video clips. The NMK website uses one of the state of the art content management systems available today. It was launched at a colorful ceremony officiated by the former Vice President, Hon. Moody Awori in October 2008.

With the repositioning of Nairobi National Museum (NNM), NMK diversified its income generation activities by offering event spaces at the refurbished NNM. The public relations and marketing department took up the task of marketing these as well as handling the bookings. The revenue generated augments NMK's income and reverses the old trend of over-dependence in gate collection. This venture also increases public awareness of its heritage programmes through a previously unreached demographic namely the corporate world. Some of the biggest events held in the year were the launch of Zain Kenya brand, the Kenya Tourist Board International Journalists cocktail and Price Waterhouse Coopers' annual budget review.

In 2008 the Public Relations Department belted many accolades. During the years Public Service Week, NMK scooped the first prize for showcasing manpower, education and special programmes. The department also spearheaded the Museum's involvement during



Members of the public watching the stick dance performance during the Lamu Cultural Festival

the Heritage week celebrations. This was the first time ever for the Heritage Week to be celebrated throughout the Museums in the country since the formation of the Ministry of State for National Heritage & Culture. During the week, NMK management engaged with the public through live media appearances as well as public forums. This culminated in a cultural evening hosted at the Nairobi National Museum.

The PR & Marketing Department is involved in active media profiling. The department focused on key areas of heritage management including new discoveries, conservation and reproductive. During this period the PR department was proud to profile key research scientists like Dr. Mwethera with his famous anti – HIV microbicide gel, Dr. Kariuki of Institute of Primate Research with his incessant fight for malaria cure and bilharzias, the male contraceptive by Dr. Adoyo just to mention but a few. The publicity received through print and electronic media through the interaction with PR Department has been essential in communicating a positive image of the National Museums of Kenya.

The Department made great efforts to satisfy the ever continuing urge of readers to keep abreast with Museum news by reviving the quarterly newsletter. The department also generated an E-news mailing list for our clients. This is meant to help the department track and maintain website visits as well as help the public keep in touch with the activities of the National Museum of Kenya.

The department organized a customer care training that benefited close to 80 staff from various departments. This training was helpful in equipping NMK staff with useful skills in better dealing with its valued clients.

The department continues to grow and improve on its strategies to maximize on opportunities of marketing and publicizing NMK through partnerships, media exposure and production of promotional materials to enhance NMK's image and contribute towards NMK's success.

8.2 Computer Services Department

NMK LAN expansion Programme

In 2006 under the EU funded National Museums of Kenya Support programme (NMKSP) funded the installation of a fiber optic backbone cable for Nairobi National Museum. This was successfully completed in December 2007 and with it came the revolution of faster and efficient communication within the Headquarters and the outside world. Consequently, several NMK departments have been networked including Supplies, Palaeontology, Archaeology, Audio Visual, Education and many more are earmarked for Networking within the next financial.

BIOTA E15, a project within the Center for Biodiversity funded the structural cabling of the Center for Bio Diversity (CBD) building enabling connectivity of most of the research departments to the NMK Network and the Internet. The Project also funded the purchase of servers that would be used as Domain Controllers, Database and Storage Servers. The provision of these servers has helped with the management and administration of the current network.

Acquisition of Computer Software Programmes

In line with the Copyrights Act of Kenya and the Museum's proposed ICT Policy NMK tightened its use of licensed software. A budget was proposed for the acquisition and licensing of software and the first phase approved and genuine software has been purchased and deployed within the institution.

As a result a number of old computers that did not meet the minimum requirements to operate on our network had to be phased out and withdrawn from the users.

The NMK Management has given firm support for the second phase of Software acquisition.

NMK new Website Implementation:

The ICT department and Public Relations and marketing department embarked on a rigorous exercise of redesigning the NMK website. A combination of modern technological platform with enriched Information technology tools was used to achieve this. A consulting firm was contracted with task of developing the look and feel of the new site and to ensure all the predefined objectives of the site were met. After the re-launch of the website in October 2007, a website review committee was constituted to look into the content and technical management of the site. This has resulted in a more efficient website for the National Museums of Kenya.

MS Connie Maina, Director Development & Corporate Affairs demonstrates a feature on the new NMK website to the then Vice President Hon. Moody Awori. The Vice President officiated the website launch.





1



2



3



4



5

1. H.E President Mwai Kibaki with Mr. Issa Timamy Chaiman NMK Board (right) during the official opening of the Nairobi National Museum (NNM) The Head of Delegation of the European Commission to Kenya H.E Eric van der Linden looks on.

2. Former Vice President Moody Awori officially opens the Heritage Centre building

3. Vice President Kalonzo Musyoka receives an honorary degree at a ceremony held at Nairobi National Museum

4. Agriculture Minister William Ruto officiates the launch of the Centre for Bee Biology and Pollination at the Centre for Biodiversity building in Nairobi National Museum.

5. John Sibi Okumu (presenter Zain Africa Challenge) with Musician Redsan during an event at the NNM

6. School children at a Chinese exhibition in the Nairobi National Museum

7. Ms. Connie Maina (right), Director Development and Corporate Affairs presents a gift fossil cast to US ambassador to Kenya HE Michael Ranneberger

8. Minister of State for National Heritage and Culture Hon. William ole Ntimama is shown the operations of the worlds biggest camera by photographer Patrick Amory during the official opening of the Living Treasures of Kenya photographic exhibition at NNM

9. Members of the public at the Loiyangalni desert Museum opening

10. Govt. Spokesman Alfred Mutua at a "Proud to be Kenyan" campaign at the Nairobi National Museum.

11. Karen Blixen Museum Curator Damaris Rotich with Danish Prime Minister's wife Ann Rasmussen.

12. Donkey race flag off during the Lamu Cultural Festival.

13. NNM Director General Dr. Idle Farah receives wheel chair donations from a representative of Doshi group of companies.



6



7



8



9



10



11



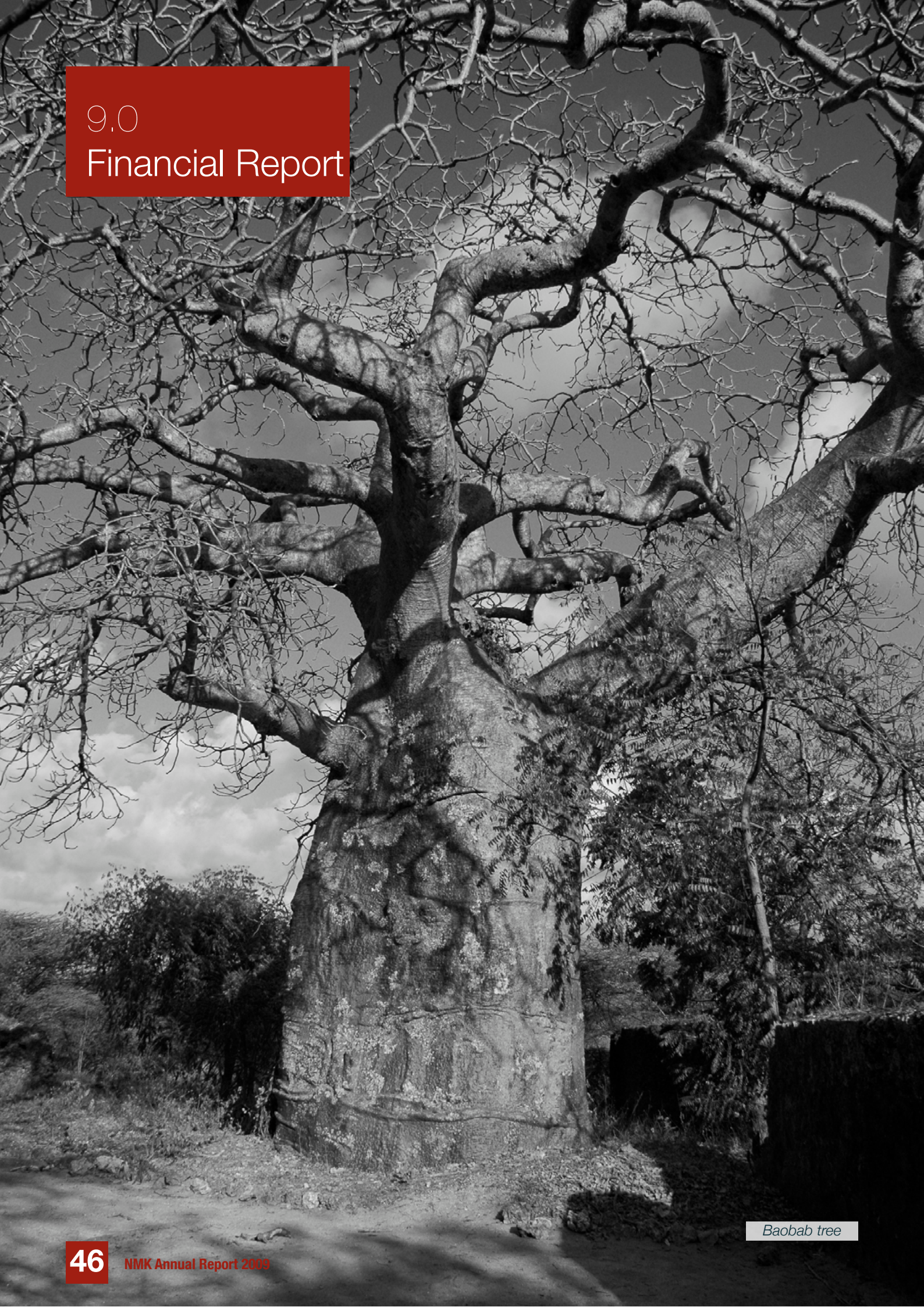
12



13

9.0

Financial Report



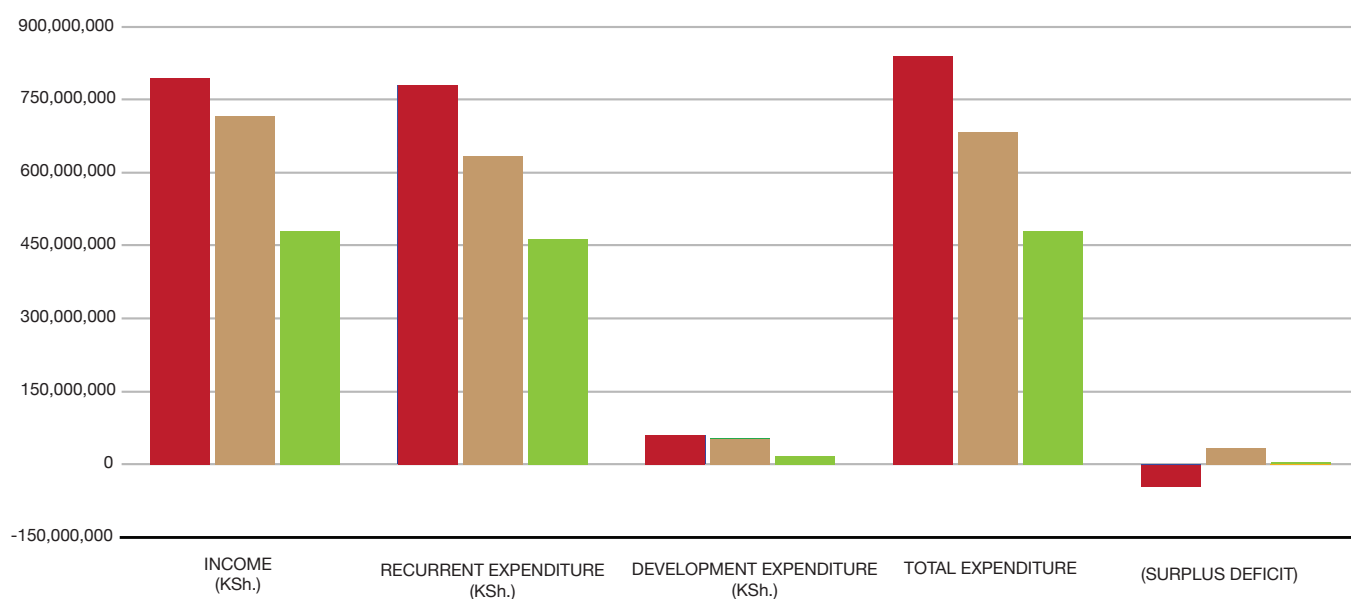
Baobab tree

Income and Expenditure

National Museums of Kenya income and expenditure statement for the year ended 30th June 2008

YEAR	2008	2007	2006
INCOME (KSh.)	793,813,107	716,274,606	479,246,821
EXPENDITURE (KSh.)			
RECURRENT	779,034,330	630,751,083	462,936,747
DEVELOPMENT	60,073,310	52,179,440	16,774,839
TOTAL EXPENDITURE	839,107,639	682,930,523	479,711,586
(SURPLUS /DEFICIT)	(45,294,533)	33,344,083	464,765

Income and Expenditure comparisons



2008

2007

2006

Balance sheet

National Museums of Kenya balance sheet as at 30th June, 2008

NON CURRENT ASSETS	2008	2007
Work in progress	22,960,538	25,146,496
Property, plant and equipment	2,367,156,439	2,174,214,746
	2,390,116,977	2,199,361,242
CURRENT ASSETS		
stocks	1,703,478	1,722,266
Debtors, deposits & prepayments	9,594,010	13,831,924
Cash book balances	117,493,771	174,541,702
Short term deposits	39,934,903	36,856,094
	168,726,162	226,951,986
CURRENT LIABILITIES		
Creditors & accrued charges	18,136,039	10,611,623
Deffered development grant	84,911,538	110,874,642
Projects deposits	42,191,920	36,685,555
	145,239,497	158,171,820
NET CURRENT ASSETS(LIABILITIES)	23,486,665	68,780,166
TOTAL NET ASSETS	2,413,603,642	2,268,141,408
FINANCED BY		
Profit and loss account	165,124,898	218,260,736
Capital reserve	2,233,843,593	2,035,245,522
Revaluation reserve	14,635,150	14,635,150

Notes to the Financial Statements:

Financial Performance

The Deficit for the year was Kshs 45,294,533. This was basically caused by post election crisis which affected the number of tourists to various museums, sites and monuments thereby affecting the revenue received and the reduction of the government recurrent grant by Kshs 10 million during the supplementary budget. However, since NMK maintains very important national heritage, it used reserves saved previously to continue maintaining various museums, sites and monuments.

Challenges

The year started well with increase of revenue received during the first half of the year. However, the positive gains were eroded after the 2007 election which resulted into post election crisis that affected the number of tourists to various museums, sites and monuments. This greatly reduced the revenue collected in various stations.

In addition to post election crisis, the increased costs of electricity also provides the challenge to NMK.

Going forward, NMK will continue facing challenges as the effects of post election crisis continue to affect the number of tourists to various museums, sites and monuments. Also the recurrent grant was reduced by Kshs. 62 million in 2008/9 financial year. The two events combined will result into financial pressure in terms paying staff salaries and also operations and maintenance activities of the institution.

11.0 Our Donors

We are grateful to the following donors funding projects at NMK

1. Royal Botanic Garden -Kew
2. Kobenhavns un/DBL Institute
3. Arsugua
4. Plantlife International
5. Arizona State University
6. Morton Publishing Company, U.S
7. British Museum
8. International Foundation of Science
9. U.S Department of Treasury
10. Kenya Wildlife Service
11. University of Brussels
12. UNESCO
13. Mathias Becker University
14. Royal Netherlands
15. Botanic Gardens Conservation International (BCGI)
16. J.R.S. Biodiversity Foundation
17. Kenya Museum Society
18. The Wild Plant Conservation Charity
19. British Ornithologist's Union
20. Smithsonian Institution
21. Bank of America
22. African Bird Club
23. University of Oslo
24. American Embassy
25. IUCN
26. Stitching Nuffic
27. IDRC
28. Flinders University
29. National Council of Science
30. Hawk/Sanctuary
31. Kew Green Richmond
32. Wild Fowl and Wetlands
33. International Centre for insects
34. Food and Agricultural Organization
35. Safaricom Ltd.
36. Royal Netherlands
37. UNESCO
38. University of Oslo
38. Critical Ecosystem Partnership Fund (CEPF)
40. French Embassy in Kenya
41. Hubert Foundation
42. Bat Conservation International
43. Council of Africa Research Field Museum, Chicago
44. USAID / CDC

10.0 Country wide Offices

URL: www.museums.or.ke
Enquiries : publicrelations@museums.or.ke

National Museums of Kenya (HQs)
Box 40658 -00100 (GPO)
020-3742161/4, 3742131/4, 4448930

Fort Jesus Museum
Box 82412, Mombasa
041-2220058, 2225934

Gede Museum
Box 5067, Gede
042-32065

Hyrax Hill
Box 9535, 20110 Lanet-Nakuru
051-2217175, 0722936630

Institute of Primate Research (IPR)
Box 24481, Karen
020-882571-4

Jumba La Mtwana
C/Fort Jesus
0734 895694

Kabarnet Museum
Box 419, Kabarnet
053-21221

Kapenguria Museum
Box 383, Kapenguria
054-62050, 0735489773

Karen Blixen
Box 40658 – 00100 (GPO)
020-882779

Kariandusi P.H.S.
Box 91, 20116 Gilgil
0721 820923

Kenyatta House
Box 41, 20600 Maralal
065-62092

Kipepeo Project
Box 58, Gede
042-32380

Kisumu Museum
Box 1779, Kisumu
057-2020332 0721 493250

Kitale Museum
Box 1219, Kitale
054-30996, 0725
903404

Lamu Museum
Box 48, Lamu
042-633073/633402

Malindi Museum
Box 939, Malindi
042-31479
Meru Museum
Box 597, 60200 Meru
064-32482, 0722 994818

Narok Museum
Box 868, 20500 Narok
050-22095

CHDA Project (Mombasa)
Former PMDA
Box 90010, Mombasa
041-222791, 224846/2225114

Tambach Museum
Box 46, Tambach
053-30704, 0722 669513/0725 401197

Kumbu Kumbu SACCO
Box 40658 -00100 (GPO)
020-3744708

Old PC's Nairobi Gallery
Box 40658 -00100 (GPO)
020-216566

Motco, Mombasa
Box 82412, Mombasa
041-2312246/2225906

Heritage Ministry
020-250576

Swahili Culture
Box 82412, Mombasa
041-222947

Rabai Museum
Box 82, Rabai-Mazeras
Garissa Museum
P.O.Box 1070 70100
GARISSA

Coastal Forest Conservation Unit
Box 596,
Kilifi

Wajir Museum
P. O. Box 53, 170200
Wajir

**Assistant Director
Western Region**
Box 9194 – 40141
KISUMU
Swan centre Shop No. 25

Koobi Fora
Box 152
LODWAR
TEL 0727208642 (Andrew)



A Kori Bustard, one of the thousands of birds on display at the Birds of East Africa Exhibition at the Nairobi National Museum.



**UNIQUE
events
VENUE**




NATIONAL MUSEUMS OF KENYA
 WHERE HERITAGE LIVES ON

**OUTDOOR
&
INDOOR**

call or write to book
 Tel: 254 20 4448930/3
 254 20 3742161/4
 254 20 3742131/4
 publicrelations@museums.or.ke
 Website www.museums.or.ke



The Herbal Garden at the Nairobi National Museum is one of the popular out-door attractions with visitors. The garden has a selection of plants with medicinal value as used by different communities across Kenya.



NATIONAL MUSEUMS OF KENYA

WHERE HERITAGE LIVES ON

© 2009 all rights reserved.